

Tailoring

Worksheet by the Merit Badge Center, Philippines



Last Updated: March 22, 2021

This worksheet was created to assist Scouts with their merit badge work. The worksheet does not replace the actual merit badge counseling process. A certified merit badge counselor for the badge must still certify your completion of each requirement and the merit badge. If a requirement says that you must take an action using words such as “discuss”, “show”, “tell”, “explain”, “demonstrate”, “identify”, etc. that is what you must do. **Merit badge counselors may not require the use of this worksheet or any similar material.** No one may add, subtract, or modify the official requirements for the merit badge as prescribed by the Boy Scouts of the Philippines.

Scout's Name: _____ Unit: _____

Requirement 1. Show how to operate, thread, and take care of a sewing machine.

Have your Merit Badge Counselor certify the completion of this requirement.

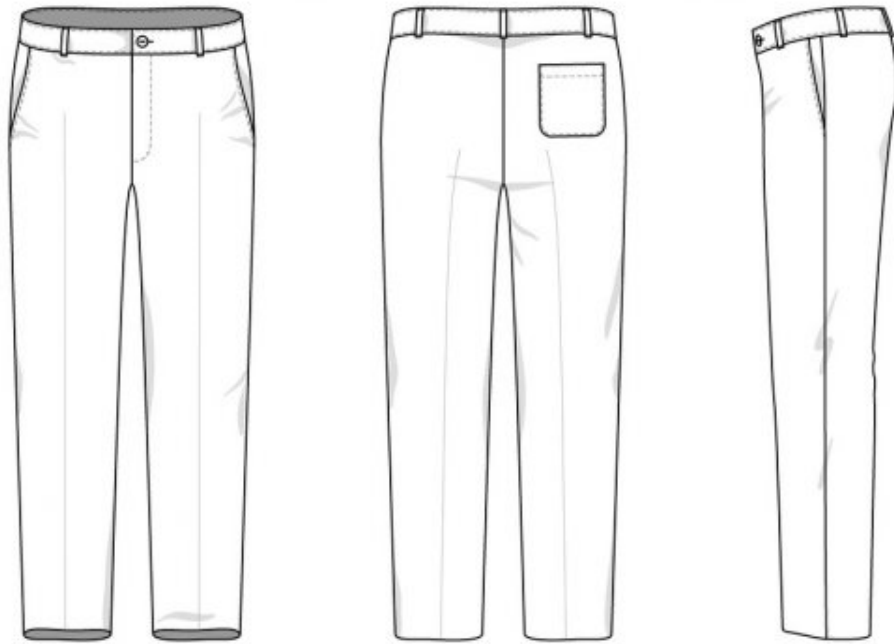
Requirement	Merit Badge Counselor Signature	Date
Operate a Sewing Machine		
Thread a Sewing Machine		
Take Care of a Sewing Machine		

Requirement 2. Identify and tell the uses of the following basic tools for tailoring: tape measure, tailor's square, scissors, tracer, tailor's chalk.

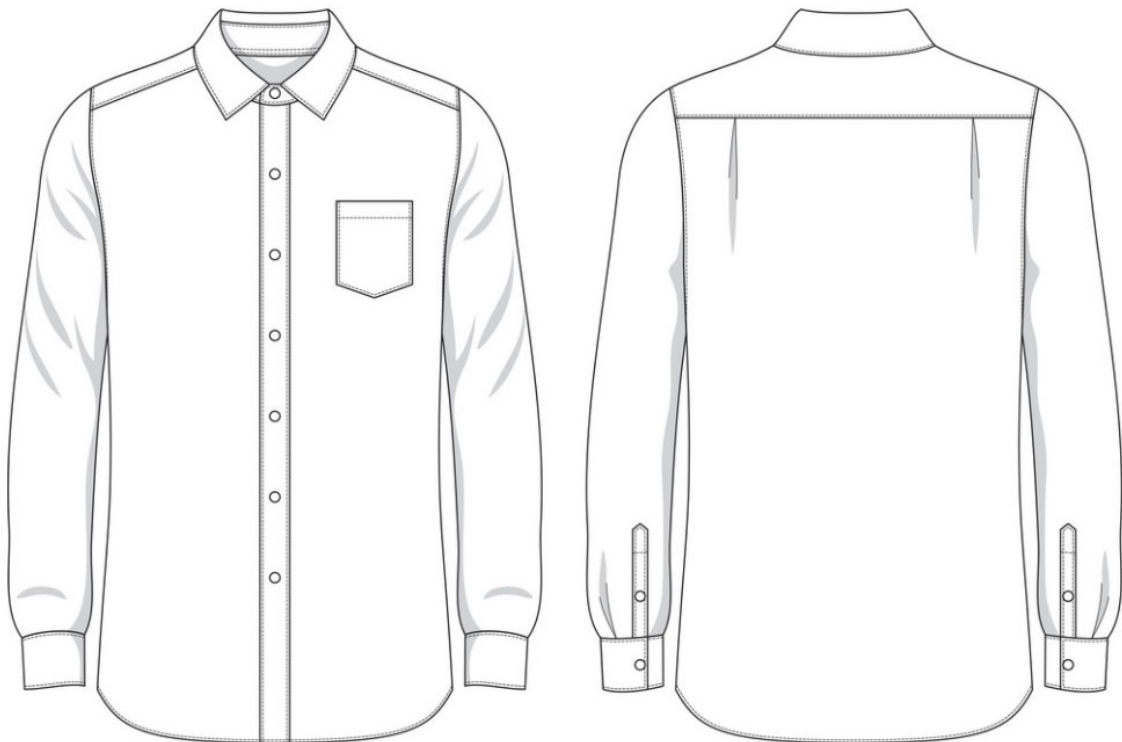
Tailoring Tool	Identified	Tell the Use
Tape Measure		
Tailor's Square		
Scissors		
Tracer		
Tailor's Chalk		

Requirement 3. Name the different parts of a pair of trousers and a casual shirt.

Name the different parts of a pair of trousers.



Name the different parts of a casual shirt.



Requirement 4. Show how to take the measurements for making pajamas and athletic pants. Draft the pattern and make a pair of pajamas or athletic pants.

Show how to take the measurements for making pajamas and athletic pants.

Body Area of Measurement	Measurement

Have your Merit Badge Counselor certify the completion of this requirement.

Merit Badge Counselor's Signature

Date

Draft the pattern of a pair of pajamas or athletic pants.

Make a pair of pajamas or athletic pants, show this to your Merit Badge Counselor.

Merit Badge Counselor's Signature

Date

Requirement 5. Explain why certain fabrics should be soaked first in water and drip-dried preparatory to cutting the cloth.

Requirement 6. Explain what is sanforized cloth.

Requirement 7. Repair or remodel one of the following: worn out collar, too short or too long trousers, tight or loose trouser waistline.

Indicate what you repaired or remodeled: _____

Have your Merit Badge Counselor certify the completion of this requirement.

Merit Badge Counselor's Signature

Date